

Mitsubishi HiTec Paper

Your partner for Industrial Inkjet-Printing

Introduction:

As a leading manufacture of high sophisticated inkjet-media **Mitsubishi HiTec Paper** has also focused on the market of industrial inkjet printing since its beginning.



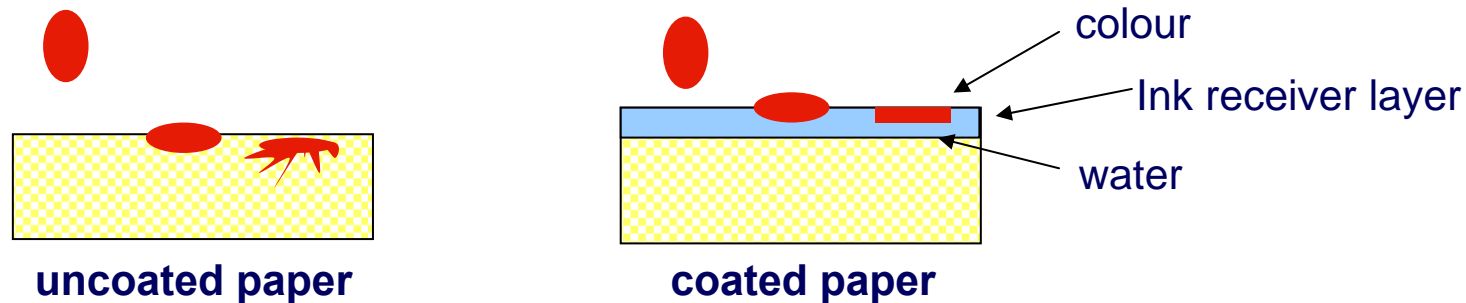
In high volume print runs up to 3,000 pages DIN A4 per minute it depends more than ever on a smoothly workflow.

Applications like mailings, billings, series-letters or transpromo, printed with variable data, require above all 100% reliable paper which guarantees a good first impression.

With its paper range **Mitsubishi HiTec Paper** offers a portfolio of various solutions which set the standard in brilliance, whiteness, drying time, absorption capacity and line sharpness. Furthermore all media from **Mitsubishi HiTec Paper** Bielefeld are FSC-accredited and in general “recyclable” without any restrictions.

Why to use coated media?

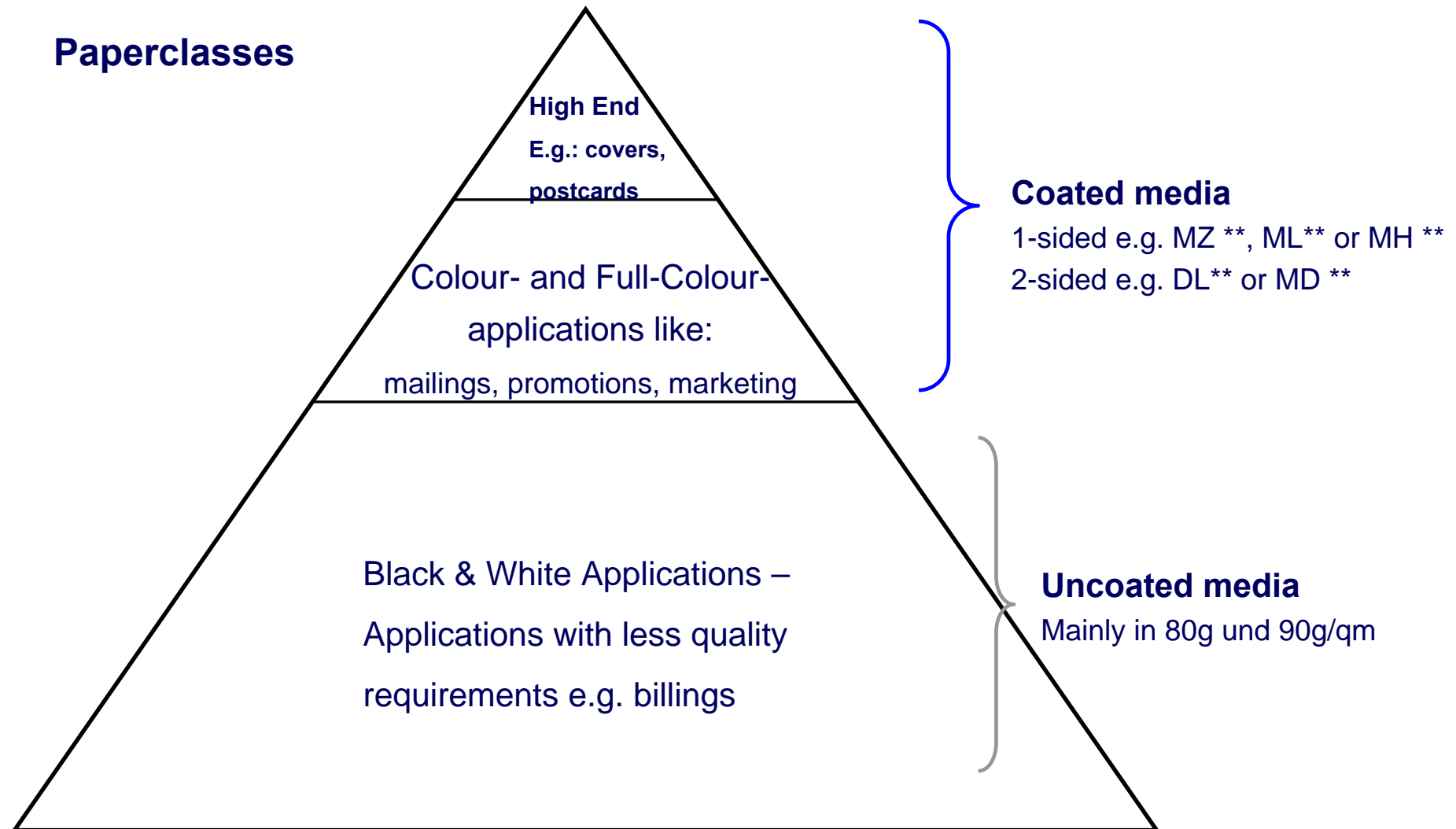
- Paper is made of cellulose fibres, fibre orientation is random.
- Without an ink-receiver-layer, ink would penetrate the fibres uncontrolled.



What is your benefit in using special coated media?

- More vivid colours! Higher brilliance, colour-trueness and line-sharpness!
- Competitive advantage! Ink reductions up to 30% (in comparison to uncoated media) without losing picture quality. Less ink = Less costs = Competitive advantage!
- This in turn allows to balance ink usage and media costs to achieve the desired results at an affordable cost per page.
- Instant dry! – Smoother workflow! Higher Printing Speed!

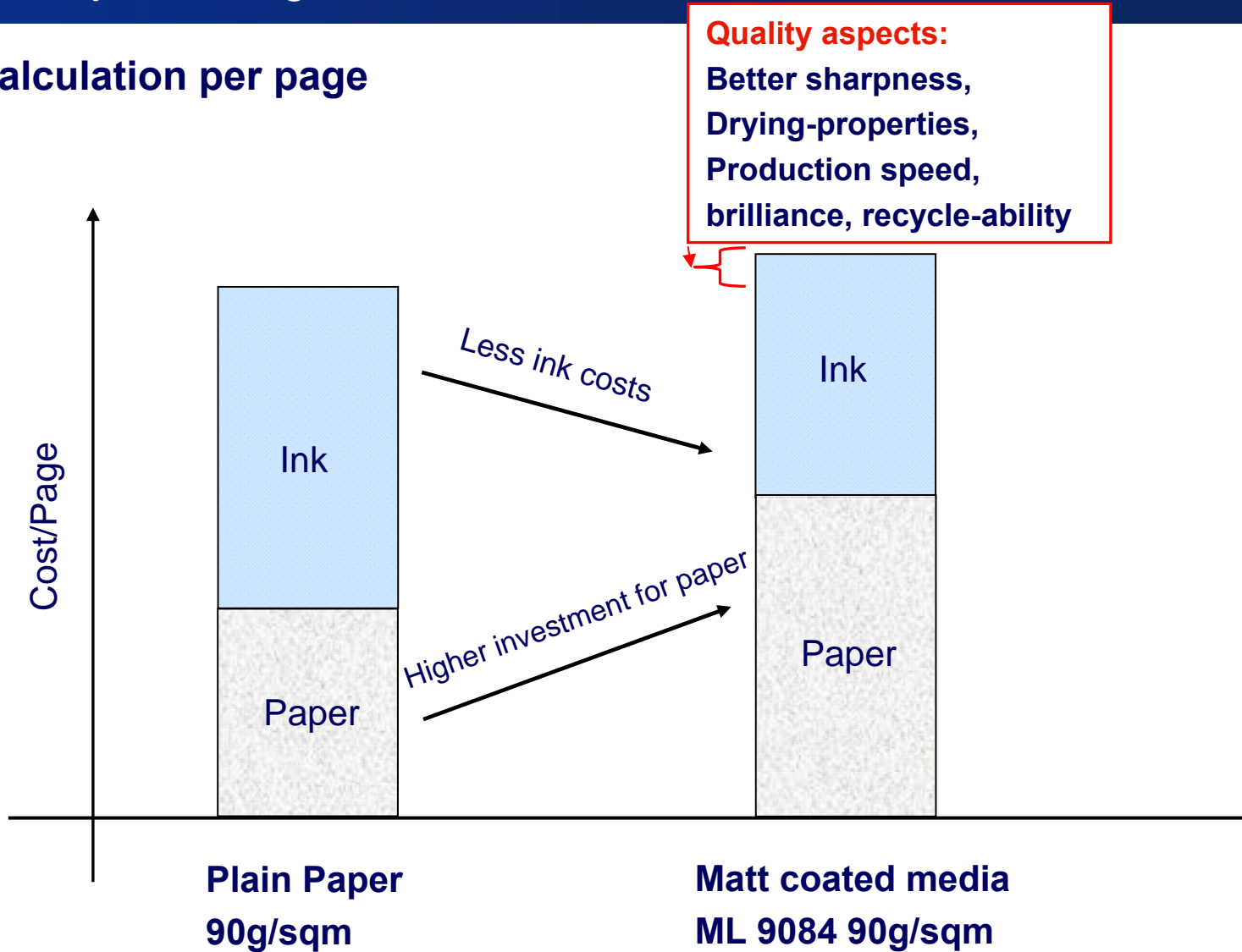
Paperclasses



Industrial Inkjet Printing

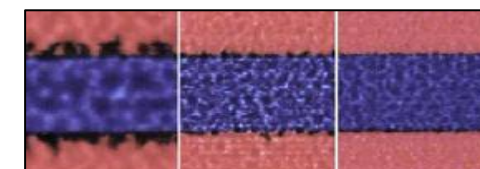
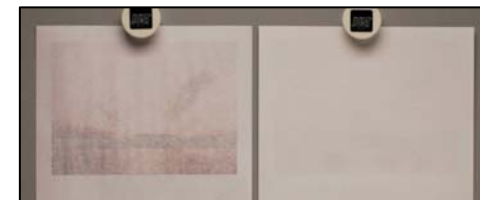
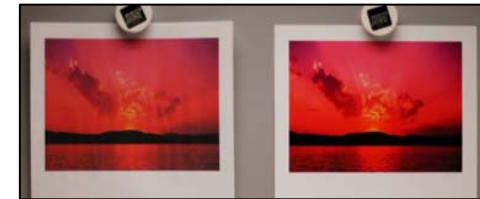
Your Partner in Printing | Media and Systems

Costcalculation per page



Coated inkjet media assures ...

- A wider colour gamut and better brilliance thanks to higher optical density.
- Smoother, high speed workflow, thanks to less cockle or curl.
- Less show through, by separating ink and water at the ink receiving layer.
- Perfect text and bar code quality thanks to better line sharpness and quality of black.
- Better image sharpness thanks to reduced bleed.

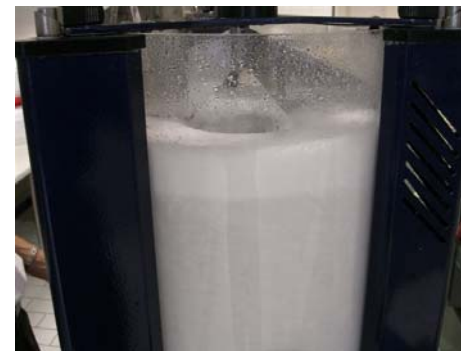


Deinking

- Due to environmental reasons de-inkability of printed inkjet papers gets more and more important
- Therefore Mitsubishi tested their matte grades in a flotation trail at Voith Test conditions according to INGEDE method 11
- Result: Mitsubishi's matte coated papers are **very good** de-inkable




before



after

“The de-inkability of the delivered paper is very good. [...] The recovered paper could be used in a 2 loop stock preparation system for producing stock for even high grades papers [...]” Test report Voith

Industrial Printing Portfolio

Product:	g/sqm:	Remarks:	Lenght (m):	 <small>The mark of responsible forestry. Cert no. SGS-COC-2664 © 1996 Forest Stewardship Council A.C. Only the products that are identified with * on the invoice are FSC certified</small>
MZ 6684	66	1-sided matt, -eco-	12.000	√
MZ 9084	85	1-sided matt, -eco-	8.000	√
ML 9084	86	1-sided matt, -standard-	8.000	√
MH 9084	88	1-sided matt, -premium-	8.000	√
DL 8084	80	2-sided matt, -standard-	8.000	√
DL 9084	88	2-sided matt, -standard-	8.000	√
DL 1084	107	2-sided matt, -standard-	7.000	√
MD 1084	94	2-sided matt, -premium-	7.000	√
MD 1384	124	2-sided matt, -premium-	6.000	√
MD 1784	167	2-sided matt, -premium-	4.500	√

... in reel width from 200mm up to 762mm winded on 70 or 76mm cores!

Industrial Inkjet Printing

Your Partner in Printing | Media and Systems

Product:	Positive experiences on.....						Offset-Printable:
	Impika IPrint- Series	Océ Jetstream	Kodak Versamark	IBM Infoprint 5000	Screen Truepress	Agfa Dotrix	
MZ 6684	●		●				<p>All qualities are perfect offset-printable and stand for short drying times and less dusting!</p>
MZ 9084			●	●	●		
ML 9084	●	●	●	●	●	●	
MH 9084		●	●	●		●	
DL 8084	●	●	●	●	●	●	
DL 9084	●	●	●	●	●	●	
DL 1084							
MD 1084	●	●	●	●		●	
MD 1384		●	●				
MD 1784	●	●	●				
L 9504/ C 1204	●						

Support & Support:

It is Mitsubishi's target to provide a full specialised portfolio to help the successful introduction of this advancing technology to market.

Upon customers request we are happy to offer:

- the appropriate printer settings or LUT files
- Sample reels and printed samples
- Offer all various kinds of shipments (upright or horizontal loading, Joloda-Transportation..)
- Ensure “printing on demand” thanks to our buffer-stock

For further information, do not hesitate to contact us

jetscript@mitsubishi-paper.com